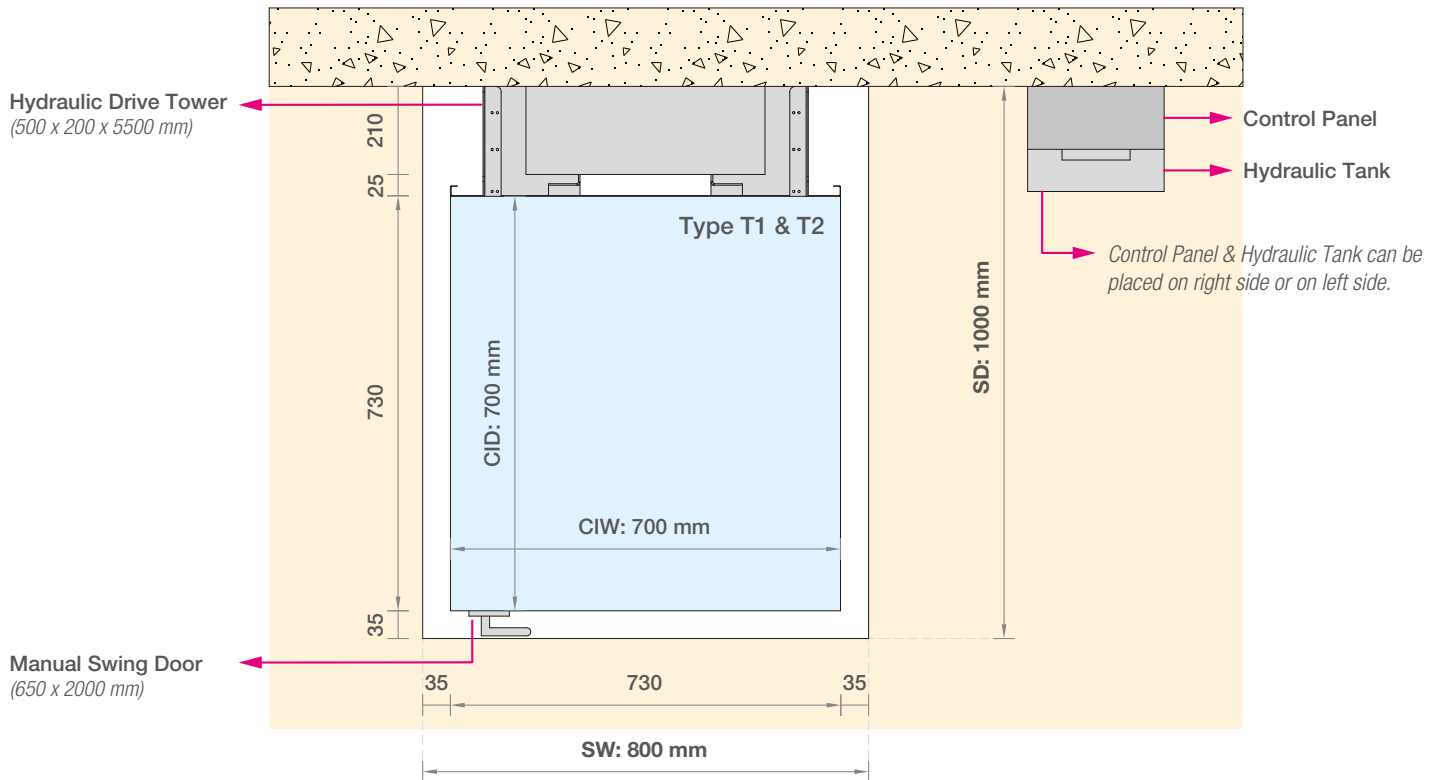




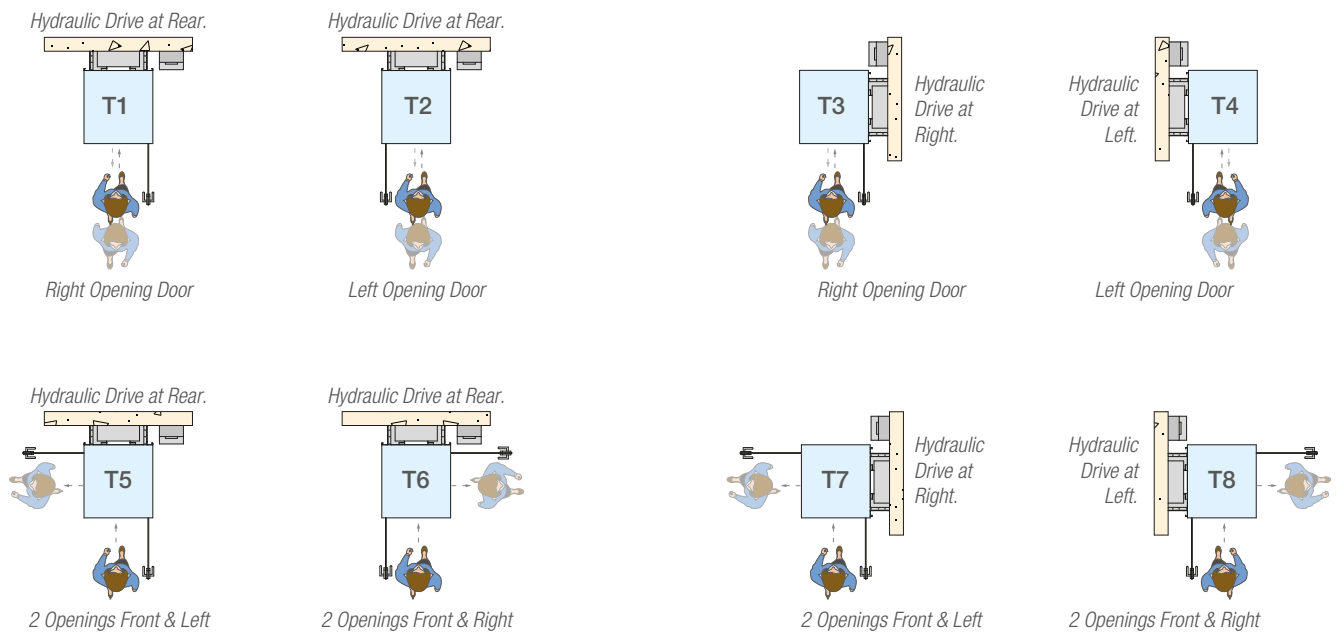
TECHNICAL CATALOGUE



Layout Drawings, Plan Views



Types of Elevator Mini

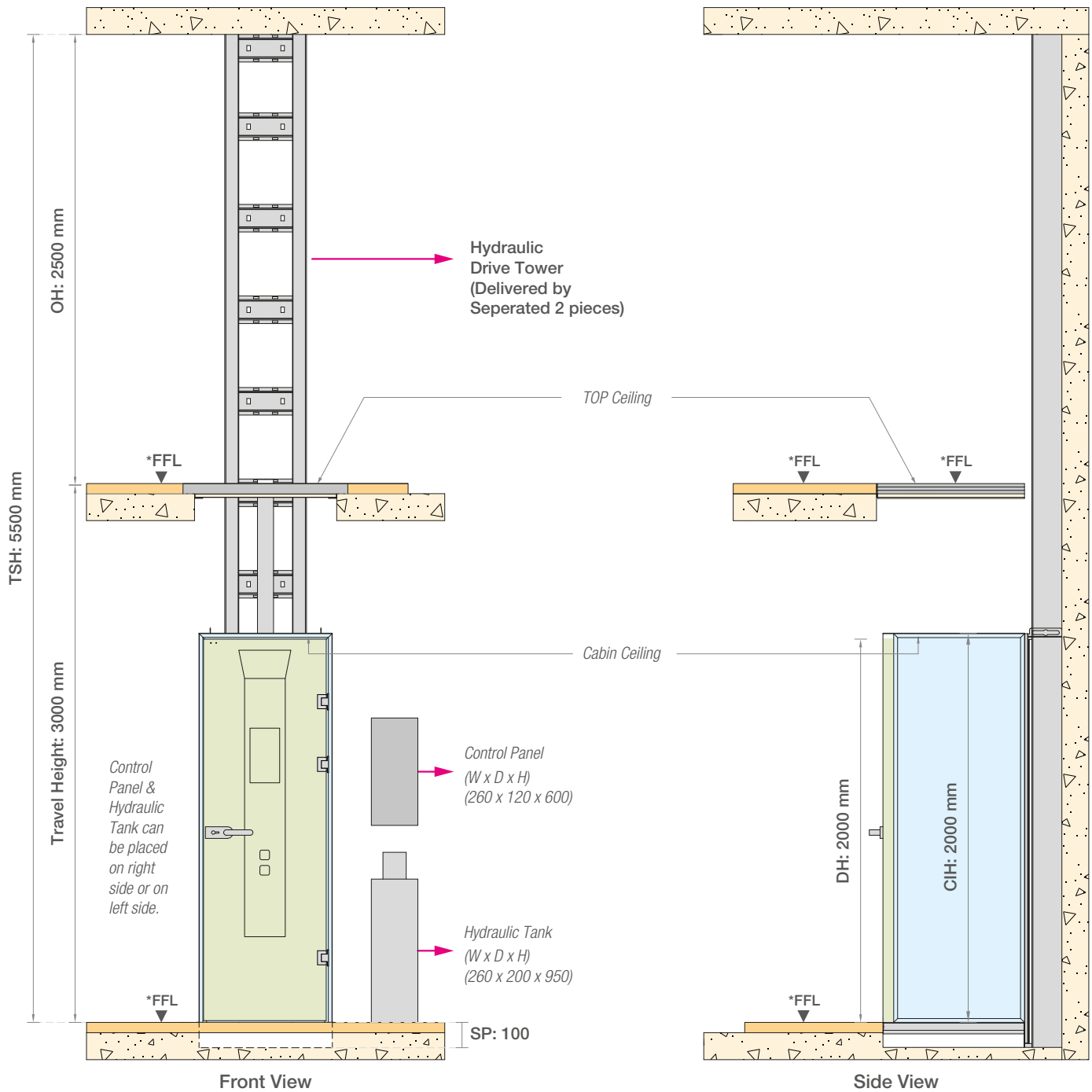


- All Dimensions in mm.

| CAPACITY IN KG AND PERSONS | | | | CABIN | | |
|----------------------------|-----------------|-----------------------------|---------|-------------|-------------|-------------|
| Rated Load Kg | Rated Speed m/s | Handicapped Accessibility ♿ | Persons | Width (CIW) | Depth (CID) | Height (CH) |
| 150 | 0.15 | N/A | 1 | 700 | 700 | 2000 |

- Cabin & Door heights are standard 2000 mm. Optioanal 2100 mm.
 - Any additional information or different cabin dimensions please contact with technical department.

Layout Drawings, Section Views

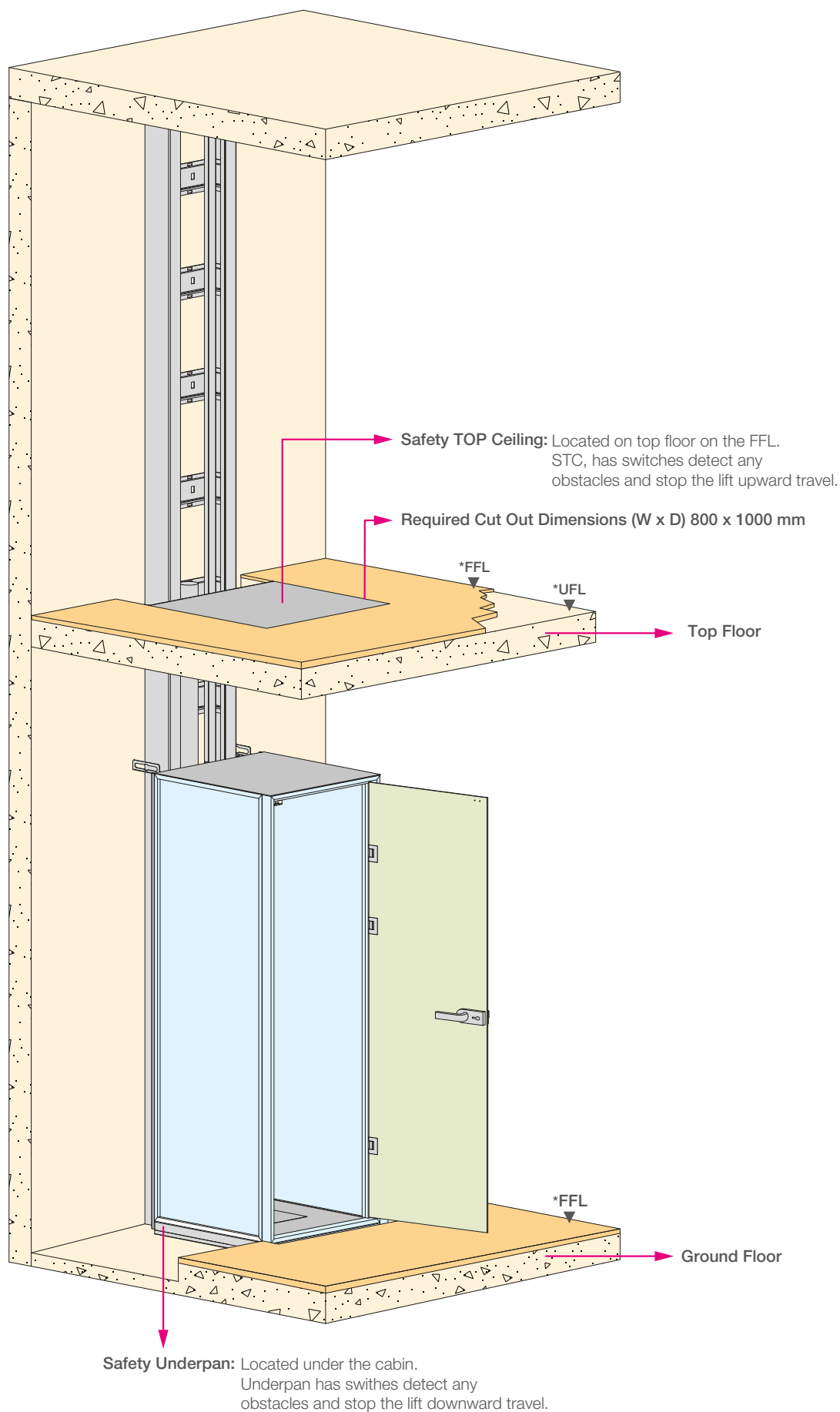


TSH :Total Structural Height.
FFL :Finishing Floor Level.

| DOOR | | CLEAR SHAFT | | | | |
|------------|-------------|-------------|------------|----------------|----------------|---------------|
| Width (DW) | Height (DH) | Width (SW) | Depth (SD) | Over Head (OH) | Shaft Pit (SP) | Travel Height |
| 650 | 2000 | 800 | 1000 | 2500 | 100 | Up to 4000 |

- Shaft dimensions width & depth are based on clear dimension with +/- 10 mm horizontal tolerances over the total travel height.
- * Travel Height: Up to 4000 mm. Manufacturer can give self declaration. To be advised by owner
- * More than 3000 mm travel heights please contact with technical department.

General View





Basic Specifications

OVERHEAD
2500mm

SINGLE PHASE
220 V

FLEXIBLE
DESIGN

SHAFT PIT
100mm

SINGLE SPEED
0,15m/s

LANDINGS
2 Stops

| | |
|------------------------|--|
| Power Supply | : 1 Phase : 220-230 V / 1,5 kW 15,5 A 50 Hz or 60Hz 3 Phase : 380-400 V / 1,5 kW 5,7 A 50 Hz or 60Hz |
| Environment | : Indoor Only. |
| Drive System / Control | : Hydraulic Direct 1:1 Drive / Microprocessor. |
| Hydraulic Drive Tower | : Modular 3 meter. |
| Rated Load | : Up to 150 kg |
| Rated Speed | : 0,15 m/s. |
| Travel Height | : Up to 3000 mm (To be advised by owner) |
| Number of Stops | : 2 Stops Only. |
| Door Configuration | : Manual Swing Door Left or Right Hinged. |
| Emergency Lowering | : Operated By Automatic for Down Travel via UPS600VA (Optional) Manual Lowering and Battery Lowering system. |
| Complies Standard | : Machine Directive 2006/42/EC Self Declaration up to 3000 mm Travel |
| Safety Equipments | : Emergency STOP Button in cabin, Overload Pressure Contact, Door Switch Contact, Rapture Valves, Pressure Sensitive Safety Surfaces Stop the Lift if Obstructed from Above or Below. |

NEW
aesthetic
and modern

